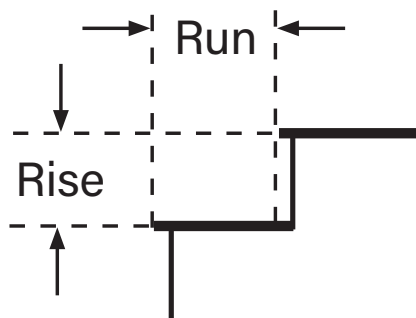


Falcon Railing

Stair Racking Guide



Measure the rise and run as shown, and use the table to determine the stair angle in degrees.

If the angle is between 1 and 5 degrees, use Straight Section with Standard Wall Mounts.

Rise (in)	Run (in)																
	7	7.5	8	8.5	9	9.5	10	10.5	11	11.5	12	12.5	13	13.5	14	14.5	15
1.0	8.1	7.6	7.1	6.7	6.3	6.0	5.7	5.4	5.2	5.0	4.8	4.6	4.4	4.2	4.1	3.9	3.8
1.5	12.1	11.3	10.6	10.0	9.5	9.0	8.5	8.1	7.8	7.4	7.1	6.8	6.6	6.3	6.1	5.9	5.7
2.0	15.9	14.9	14.0	13.2	12.5	11.9	11.3	10.8	10.3	9.9	9.5	9.1	8.7	8.4	8.1	7.9	7.6
2.5	19.7	18.4	17.4	16.4	15.5	14.7	14.0	13.4	12.8	12.3	11.8	11.3	10.9	10.5	10.1	9.8	9.5
3.0	23.2	21.8	20.6	19.4	18.4	17.5	16.7	15.9	15.3	14.6	14.0	13.5	13.0	12.5	12.1	11.7	11.3
3.5	26.6	25.0	23.6	22.4	21.3	20.2	19.3	18.4	17.7	16.9	16.3	15.6	15.1	14.5	14.0	13.6	13.1
4.0	29.7	28.1	26.6	25.2	24.0	22.8	21.8	20.9	20.0	19.2	18.4	17.7	17.1	16.5	15.9	15.4	14.9
4.5	32.7	31.0	29.4	27.9	26.6	25.3	24.2	23.2	22.2	21.4	20.6	19.8	19.1	18.4	17.8	17.2	16.7
5.0	35.5	34.0	32.0	30.5	29.1	27.8	26.6	25.5	24.4	23.5	22.6	21.8	21.0	20.3	19.7	19.0	18.4
5.5	38.2	36.3	34.5	32.9	31.4	30.1	28.8	27.6	26.6	25.6	24.6	23.7	22.9	22.2	21.4	20.8	20.1
6.0	40.6	38.7	36.8	35.2	33.7	32.3	31.0	29.7	28.6	27.6	26.6	25.6	24.8	24.0	23.2	22.5	21.8
6.5	42.9	40.9	39.1	37.4	35.8	34.4	33.0	31.8	30.6	29.5	28.4	27.5	26.6	25.7	24.9	24.1	23.4
7.0	45.0	43.0	41.2	39.5	37.9	36.4	35.0	33.7	32.5	31.3	30.3	29.2	28.3	27.4	26.6	25.8	25.0
7.5	47.0	45.0	43.2	41.4	39.8	38.3	36.9	35.5	34.3	33.1	32.0	31.0	30.0	29.1	28.2	27.4	26.6
8.0	48.8	46.8	45.0	43.3	41.6	40.1	38.7	37.3	36.0	34.8	33.7	32.6	31.6	30.7	29.7	28.9	28.1
8.5	50.5	48.6	46.7	45.0	43.4	41.8	40.4	39.0	37.7	36.5	35.3	34.2	33.2	32.2	31.3	30.4	29.5

Beyond the recommended angle.

If the angle is between 32 and 36 degrees, use Standard Stair Section with Standard Stair Mounts.

If the angle is between 6 and 32 degrees **OR** 37 and 38 degrees, use Special Stair Section* with Uncut Stair Mounts (job site modification may be needed).

*For Special Stair Sections please specify rise and run on order.