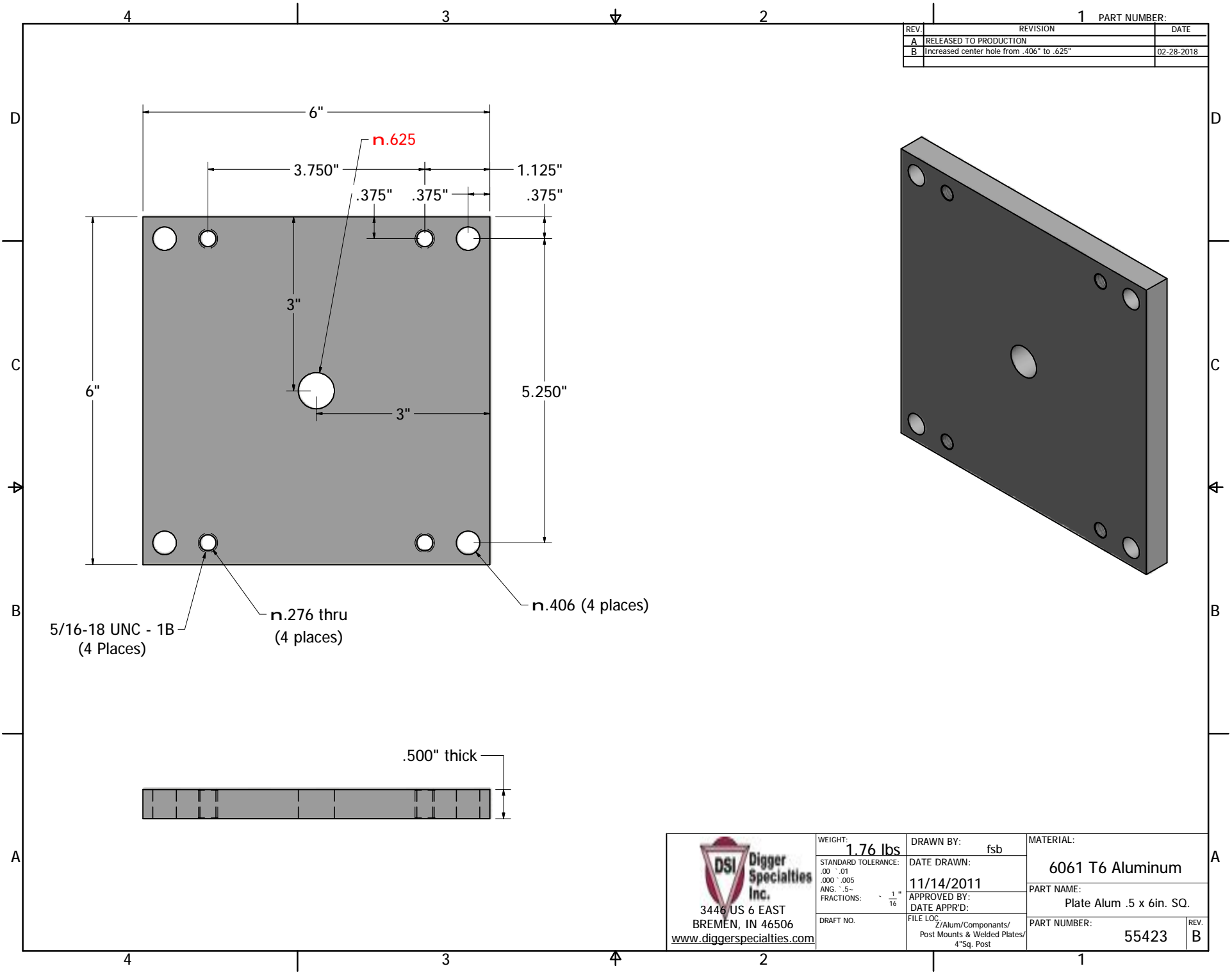


REV.	REVISION	DATE
A	RELEASED TO PRODUCTION	
B	Increased center hole from .406" to .625"	02-28-2018

1 PART NUMBER:



5/16-18 UNC - 1B (4 Places)
 n.276 thru (4 places)
 n.406 (4 places)

.500" thick

DSI Digger Specialties Inc.
 3446 US 6 EAST
 BREMEN, IN 46506
www.diggerspecialties.com

WEIGHT: **1.76 lbs**
 STANDARD TOLERANCE: .00 - .01
 .000 - .005
 ANG.: .5 -
 FRACTIONS: $\frac{1}{16}$
 DRAFT NO.

DRAWN BY: fsb
 DATE DRAWN: 11/14/2011
 APPROVED BY:
 DATE APP'D:
 FILE LOC: $\frac{1}{2}$ Alum/Components/
 Post Mounts & Welded Plates/
 4"Sq. Post

MATERIAL: 6061 T6 Aluminum
 PART NAME: Plate Alum .5 x 6in. SQ.
 PART NUMBER: 55423
 REV. B