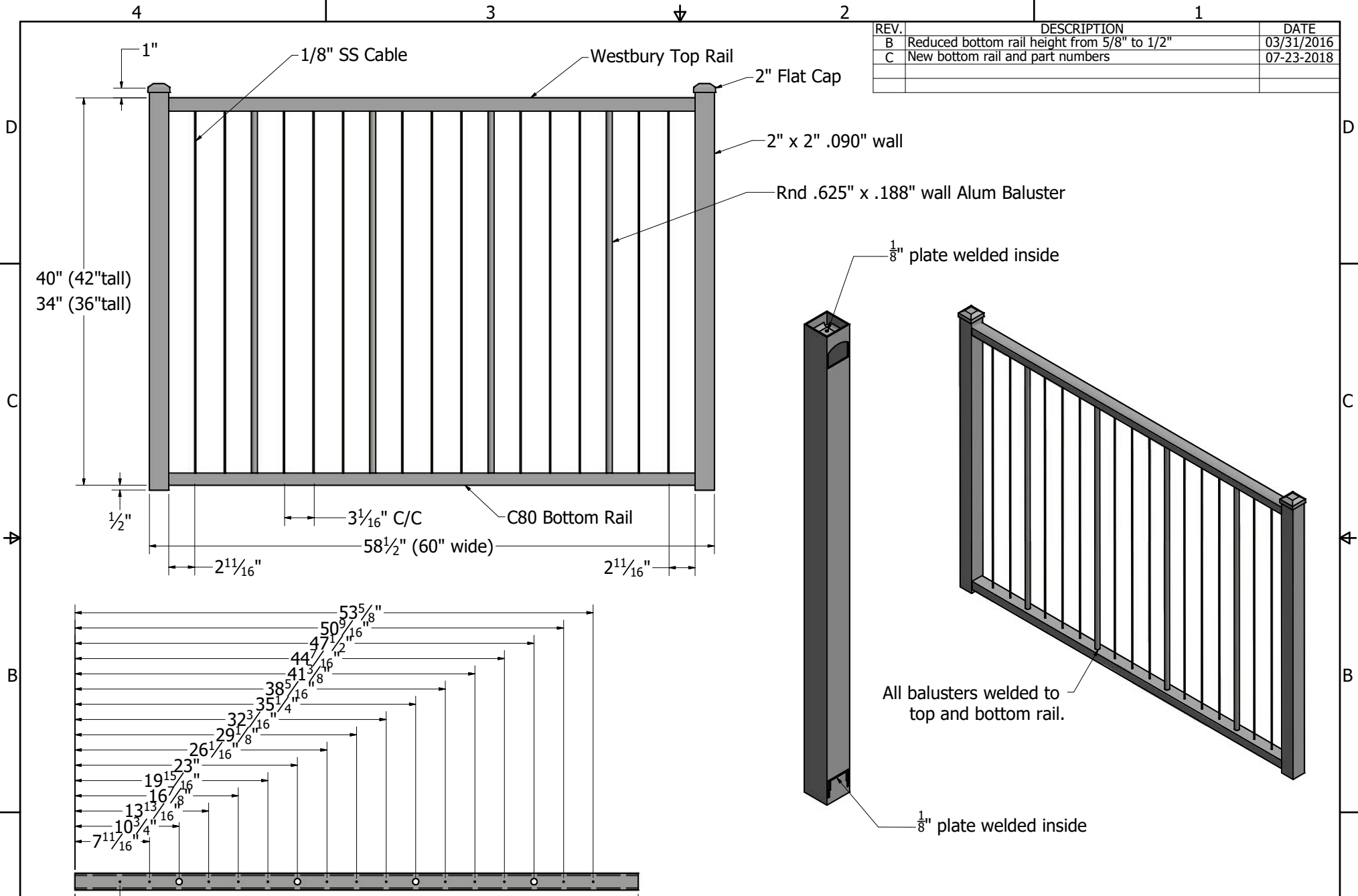


REV.	DESCRIPTION	DATE
B	Reduced bottom rail height from 5/8" to 1/2"	03/31/2016
C	New bottom rail and part numbers	07-23-2018



All balusters welded to top and bottom rail.

1/8" plate welded inside

DSI Digger Specialties Inc.
 3446 US 6 EAST
 BREMEN, IN 46506
www.diggerspecialties.com

WEIGHT:	DRAWN BY: cm	MATERIAL:
STANDARD TOLERANCE: .00 .01 .000 .005 ANG. .5~	DATE DRAWN: 2/23/2016	Aluminum & SS Cable
FRACTIONS: ± 1/16"	DRAFT NO. 20160223-1C	
FILE LOC: Z:\Aluminum\Westbury\C80 VertiCable\Gates\C80 Gate 60W 71698, 71701.idw	PART NAME: C80 Gate 60W 71698, 71701.idw	PART NUMBER: 71698 (60W x 36T) 71701 (60W x 42T)

A
C
D