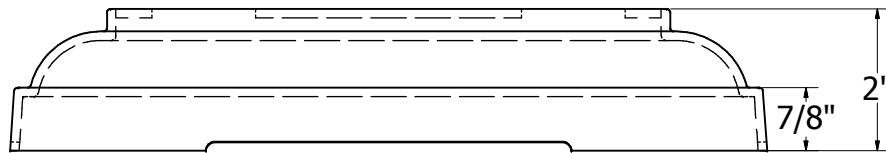
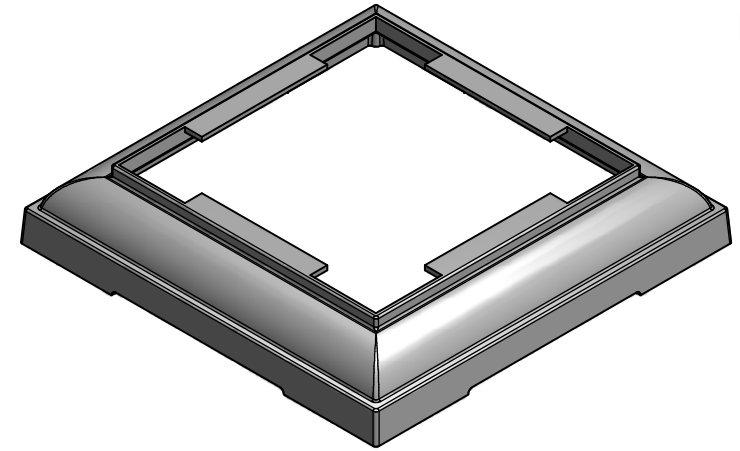
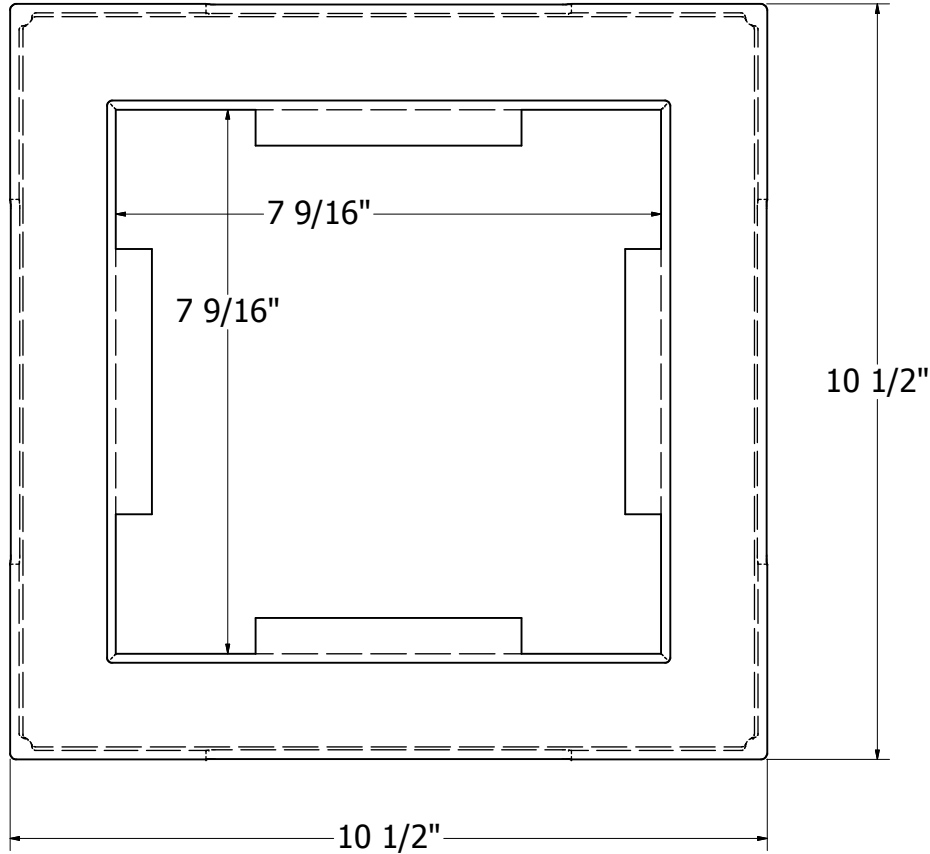


REV.	REVISION	DATE




DSI Digger Specialties Inc.
 3446 US 6 EAST
 BREMEN, IN 46506
www.diggerspecialties.com

WEIGHT: 1.310 lb./ea
 STANDARD TOLERANCE:
 .00 ~.01
 .000 ~.005
 ANG. ~.5°
 FRACTIONS: ± 1/16"

DRAWN BY: WJM
 DATE DRAWN:
 2/16/2012
 DRAFT NO. 20120216-1

MATERIAL:
Cast Aluminum
 PART NAME:
 8in. Square Recessed Base.idw
 PART NUMBER:
55862

4

3

2

1

4

3

2

1

D

D

C

C

B

B

A

A