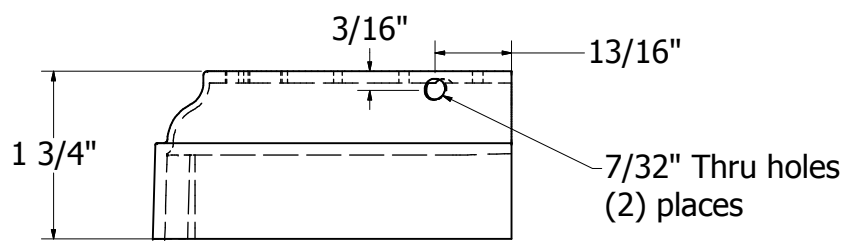
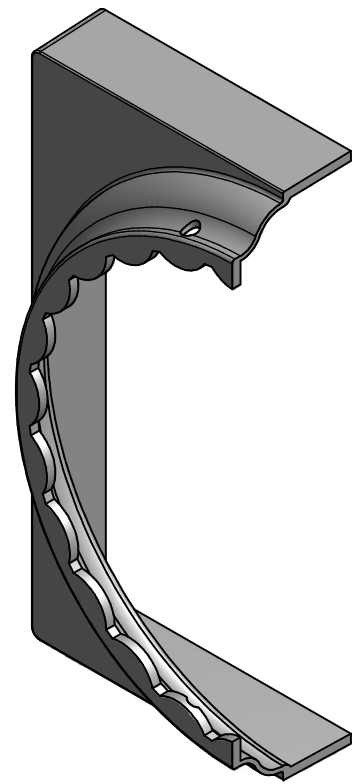
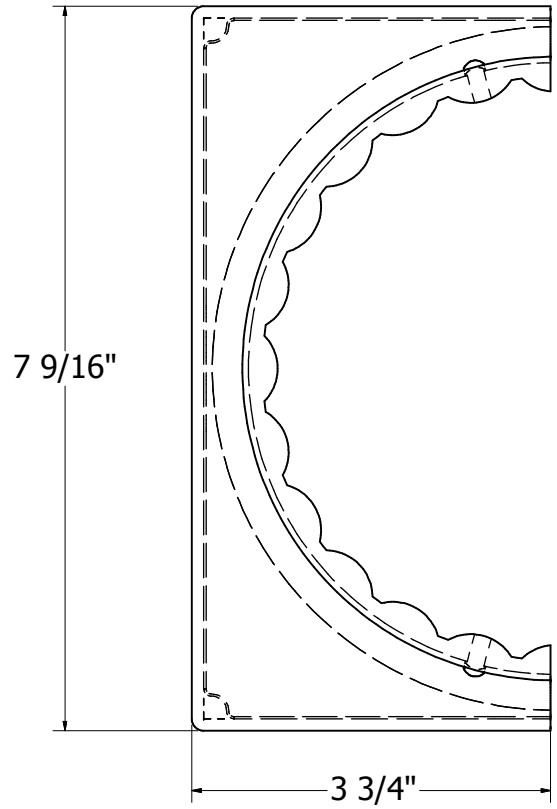



REV.	DESCRIPTION	DATE
A	Changed 7/32 pre-drill hole loc. to center of first flute	05/08/2012



Raw Part #  
55832

 <p><b>DSI Digger Specialties Inc.</b> 3446 US 6 EAST BREMEN, IN 46506 www.diggerspecialties.com</p>	WEIGHT: 0.387 lb/ea	DRAWN BY: WJM	MATERIAL:
	STANDARD TOLERANCE: .00 ~.01 .000 ~.005 ANG. .5~	DATE DRAWN: 3/27/2012	Cast Aluminum
	FRACTIONS: ± 1/16"	DRAFT NO. 20120327-1	PART NAME: 6in. Rnd Fluted Base Split.ipt
	FILE LOC: Z:\Aluminum\DSI Columns\Rnd Fluted Columns\6 Inch\6in Round Fluted Base Split.idw		PART NUMBER: 53324
			REV. A